




suremark[®]

Precision Skin Marking Systems
International Product Catalog



As an innovator of **PRECISION SKIN MARKING PRODUCTS** for the medical imaging industry, Suremark® is continually looking for opportunities to help make the process more comfortable for patients, while still maintaining ultimate performance and accuracy for technologists and health care providers. In fact, Suremark® is the first company in the world to develop and offer a complete line of environmentally safe, **NON-METALLIC** precision skin markers to the medical industry.

We have continued our reputation for innovation with our new **BEAUTYLINE™** products that are designed with all of the technical precision that has made Suremark famous, but now with a soothing artistic flair to help comfort and relax patients during stressful examinations. Add to this our expanded line of PortalMarks™ for radiation procedures, and it is no wonder Suremark® is the most trusted name in conformable and consistent skin marking products available to imaging professionals in the industry today.

Of course, we still design and manufacture the finest quality and most comprehensive **LATEX-FREE** skin marking labels available today. From our advanced label adhesive to our precise marker placement, Suremark® labels are guaranteed to be the best performing markers you have ever used. You can be confident that all Suremark® marking systems will stay where you put them, the first time, and show up clearly and consistently in all of your medical imaging applications.

Despite their superior performance, Suremark® labels are easy on your budget. Through our experience, we have uncovered numerous ways to improve efficiency, resulting in substantial savings over competing brands, and all Suremark® labels are backed by an unconditional money back guarantee.



CC-25



CC-15

ComfortMark™

After years of feedback from industry professionals and patients, the new ComfortMark™ labels have been developed to be the most conformable and comfortable skin markers ever. The flexible, stretchable material, easy-peel tab and adhesive-free center is not only comfortable on patient's skin, but the beautiful artwork is designed to help ease the stress of examinations.

Available in 1.5mm lead, or 2.5mm non-metallic ball sizes.

Packaged with 110 markers per box.

Price Code: SG





suremark Mammography

All Suremark Labels are *Latex-Free*



BL-15



BL-20

Suremark® BeautyLine™ Marks NEW

This new upgraded design, maintains all of the technical advantages of our regular Suremark® labels including our famous “tab” feature, but is also produced with a soothing artistic flair to help take the edge off of stressful examinations for patients.

Available in 1.5mm, 2.0mm ball sizes.
Packaged with 110 markers per box.
Price Code: SG



Suremark®

The most common style for general use. Suremark® 1.0mm, 1.2mm, 1.5mm, 1.8mm, 2.0mm and 2.5mm labels are perfect for distinguishing between a nipple shadow and lesion, thereby reducing costly repeat examinations.

Available in 1.0mm, 1.2mm, 1.5mm, 1.8mm, 2.0mm and 2.5mm ball sizes.
Packaged with 110 markers per box
Price Code: SA



Suremark® Tabs™

This design maintains all of the advantages of our regular Suremark® labels, with the added benefit of a “tabbed” feature. This enables natural and conforming placement on more prominent nipples or where more skin contact is preferred.

Available in 1.5mm, 2.0mm and 2.5mm ball sizes.
Packaged with 110 markers per box.
Price Code: SB



SL-10



SL-12



SL-15



SL-18



SL-20



SL-25



SL-15T



SL-20T



SL-25T



Suremark® Relief Tabs™

Mammograms are uncomfortable enough for patients without the painful removal of nipple markers. With this in mind, give your patients some relief with Suremark®'s Relief Tabs™. The unique adhesive-free center won't stick to sensitive areas of the skin.

Available in 1.5mm, 2.0mm and 2.5mm ball sizes.

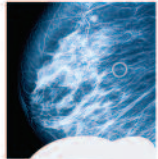
Packaged with 110 markers per box.

Price Code: SG



suremark Mammography

All Suremark Labels are *Latex-Free*



The SL-MO (our BEST selling mole marker) encircling a mole. Its semi-lucent design allows tissue directly under the marker to be clearly seen.



SL-MO



SL-CR2



SL-T1



SL-A2

Suremark® Clearmarks™

The **metal-free** semi-lucent markers are made of materials specially designed to clearly mark moles, entry points, and mass locations, yet light enough to enable clear visibility of all underlying details.

Packaged with 110 markers per box.

Price Code: SC



BL-MO

Suremark® BeautyLine™ Mark **NEW**

With the same precision design as Clearmarks™, this **metal-free** semi-lucent marker also has beautiful artwork to help relieve the stress of exams.

Packaged with 110 markers per box.

Price Code: SG



CT-O

Suremark® CT-O **NEW**

The new CT-O is opaque and artifact-free, making it perfect for indicating and marking details in mammography.

Packaged with 50 markers per box.

Price Code: SJ





SL-M2



SL-M3

Suremark® Mole Markers™

These markers are uniquely designed to locate raised moles and other skin nevi without overshadowing micro-calcifications. The radiolucent ring, when placed around a protuberance, prevents flattening due to compression.

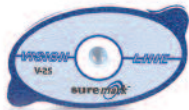
Available with 2 ref. points (SL-M2) or 3 ref. points (SL-M3).

Packaged with 50 markers per box. US Patent Number 6,269,148

Price Code: SE



V-20



V-25

Visionmark™

The Visionmark™ is the next generation in general use skin markers. These specially formulated **NON-METALLIC** markers perform consistently and accurately in a variety of applications. An excellent tool for distinguishing between nipple shadow and lesion, the Visionmark™ reduces the need for repeat examinations. Easy Peel Tabs.

Available in 2.0mm and 2.5mm ball sizes.

Packaged with 110 markers per box.

Price Code: SG



CL-8



CL-10



CLEARLINE™ Semi-lucent Scar Markers

Clearline™ low-density, **non-metallic**, semi-lucent scar markers provide distinct outlining of scars and other areas of concern without obscuring micro-calcifications in mammography.

CL-8 - 0.8mm semi-lucent line - packaged with 336 cm per box.

CL-10 - 1.0mm semi-lucent line - packaged with 336 cm per box.

Price Code: SD





SL-W3
(.3mm wire)



SL-W4
(.4mm wire)



Suremark® Wire

This valuable tool is used for marking scar tissue, outlining palpable nodules, moles, entry points, and in CT Scans.

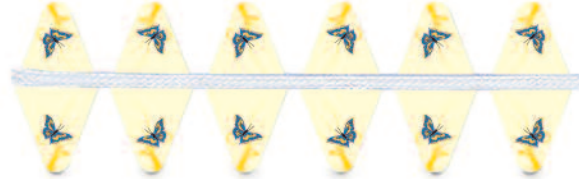
Available in .3mm, .4mm, wire sizes.

Packaged with 336cm per box.

Price Code: SC



BL-W4 (.4mm wire)



Suremark® BeautyLine Wire

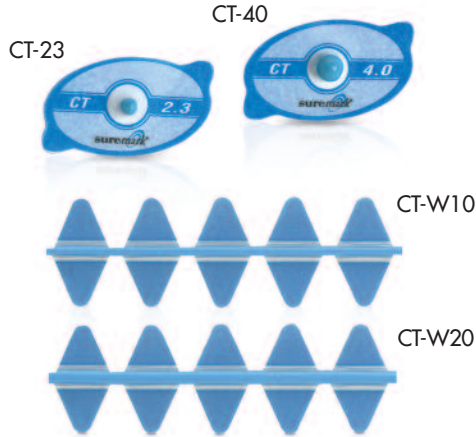
BeautyLine is the next generation of precision skin marking tools, providing precision accuracy for technologists and beautiful butterfly art for the patients, helping to ease their stress.

Available in .4mm

Packaged with 336cm per box.

Price Code: SG





CT-MARK™ and CT-LINE™

The CT-Mark™ and CT-Line™ have been created specifically for CT imaging. This specially formulated NON-METALLIC material is the result of years of research and development, resulting in a virtually artifact-free opaque marker that is perfect for nearly all CT marking applications.

CT-Mark Available in 2.3mm and 4.0mm ball sizes.

CT-23 Packaged with 110 markers per box.

CT-40 Packaged with 50 markers per box.

CT-W10 - 1.0mm line - packaged with 300 cm per box.

CT-W20 - 2.0mm line - packaged with 300 cm per box.

Price Code: SG (CT-23), SJ (CT-40), SK (CT-W10, CT-W20)



Suremark® CT-O **NEW**

Like the rest of our CT products, the new CT-O is opaque and artifact-free, making it perfect for indicating and marking details in CT Scans.

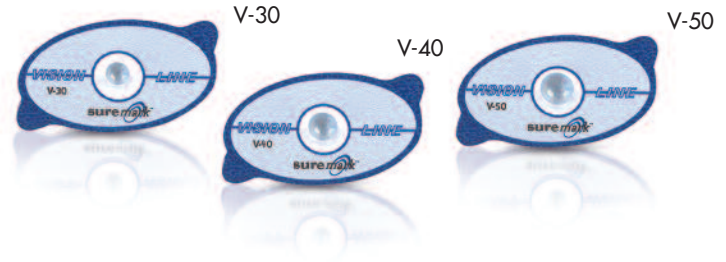
*Packaged with 50 markers per box.
Price Code: SJ*



Suremark® CT-CR3 **NEW**

Created by request, the new CT-CR3 is another precision skin marking tool perfectly suited for CT applications.

*Packaged with 50 markers per box.
Price Code: SJ*



VISION LINE™ Series

Visionmark CT™

The Visionmark™ is the next generation in general use skin markers. These specially formulated NON-METALLIC markers perform consistently and accurately in a variety of applications. Easy Peel Tabs.

Available in 2.0mm and 2.5mm ball sizes.

Packaged with 110 markers per box.

Price Code: SG

Visionmark™ CT Plus

These specially formulated NON-METALLIC markers reduce read time on CT scans with virtually no scatter. These sizes and ball densities are perfect for all CT skin marking applications. Easy Peel Tabs.

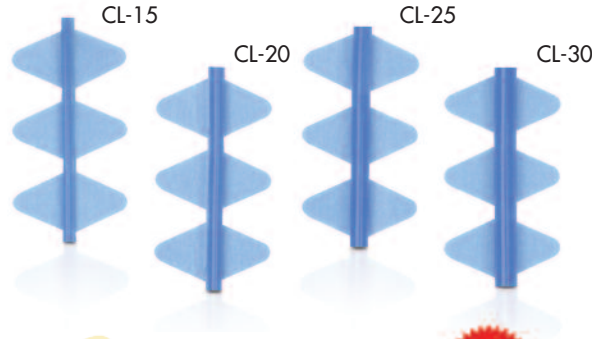
Available in 3.0mm, 4.0mm and 5.0mm ball sizes.

Packaged with 50 markers per box.

Price Code: SH (V-30), SJ (V-40 and V-50)



SL-20



SL-W3
(.3mm wire)



SL-W4
(.4mm wire)



Suremark®

The most common style for general use. Suremark® 2.0mm labels are perfect for marking set-up points in CT exams.

Packaged with 110 markers per box.
Price Code: SA



Clearline™ low-density, **non-metallic**, semi-lucent scar markers provide distinct outlining of scars and other areas of concern.

- CL-15 - 0.8mm semi-lucent line - packaged with 320 cm per box.
 - CL-20 - 2.0mm semi-lucent line - packaged with 320 cm per box.
 - CL-25 - 2.5mm semi-lucent line - packaged with 203 cm per box.
 - CL-30 - 3.0mm semi-lucent line - packaged with 165 cm per box.
- Price Code: SD

Suremark® Wire

This valuable tool is used for marking scar tissue and for marking field lines in CT Scans.

Available in .3mm and 4mm wire sizes.
Packaged with 336cm per box.
Price Code: SC



PortalMark™ LABELS

In lieu of permanent or temporary tattoos, apply PortalMark™ labels to delineate radiation treatment areas. Their premium medical grade adhesive is hypo-allergenic and latex-free, resulting in less irritation for the patient. PortalMark™ labels are constructed of waterproof, yet breathable material for maximum performance and comfort for up to two weeks. Our unique Suregrip™ applicator discs ensure easy and accurate placement of PortalMark™ labels without contaminating the adhesive.

The **New 200 Series** is designed for use with **darker skin surfaces**, giving technologists a complete line of options.

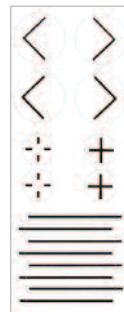
PM-100 and 200 - Each sheet includes: 8 field lines, 4 corners, 2 set up points, and 2 isocenters.

PM-125 and 225 - Each sheet includes: 8 corners.

PM-150 and 250 - Each sheet includes: 18 isocenters, and 6 field lines.

All PortalMark™ labels are packaged with 50 sheets per box.

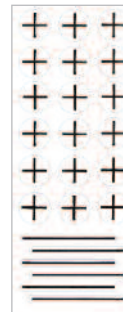
Price Code: SF



PM-100



PM-125



PM-150



PM-200



PM-225



PM-250





PortalMark™ LABELS **NEW**

The newest members of the PortalMark™ label family offer additional options for delineating radiation treatment areas. Their premium medical grade adhesive is hypo-allergenic and latex-free, resulting in less irritation for the patient. Constructed of waterproof, yet breathable material for maximum performance and comfort, PortalMarks hold strong for up to two weeks. Our unique Suregrip™ applicator discs ensure easy and accurate placement without contaminating the adhesive.

Packaged with 110 labels per box.

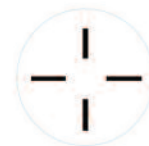
Price Code: SK



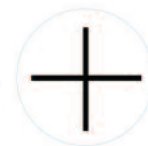
PM-300 Shown



PM-375 Shown



PM-300
(PM-400)*



PM-325
(PM-425)*



PM-350
(PM-450)*



PM-375
(PM-475)*

**PM-400 Series uses an alternate material and adhesion for more humid environments and particular skin surfaces.*



SL-30



SL-40



SL-50



Powermark™

This design maintains all of the advantages of our regular Suremark® labels, with larger lead ball sizes for visibility in radiation therapy.

Available in **3.0mm**, **4.0mm**, and **5.0mm** ball sizes.

Packaged with 50 markers per box.

Price Code: **SD** (SL-30), **SE** (SL-40, SL-50)

SL-W8
(.8mm wire)



SL-W15
(1.5mm wire)



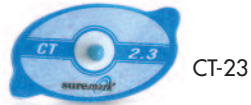
Suremark® Wire

This valuable tool is used for marking scar tissue, outlining palpable nodules, and opaque outlining of field lines and match lines.

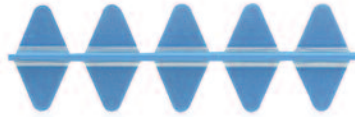
Available in **.8mm**, and **1.5mm** wire sizes.

Packaged with 336cm per box.

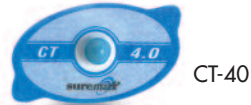
Price Code: **SE**



CT-23



CT-W10



CT-40



CT-W20

CTMARK™ and CTLINE™

The CT-Mark™ and CT-Line™ have been created specifically for CT imaging. This specially formulated **NON-METALLIC** material is the result of years of research and development, resulting in a virtually artifact-free opaque marker that is perfect for nearly all CT marking applications.

CT-Mark Available in 2.3mm and 4.0mm ball sizes.

CT-23 Packaged with 110 markers per box.

CT-40 Packaged with 50 markers per box.

CT-W10 - 1.0mm line - packaged with 300 cm per box.

CT-W20 - 2.0mm line - packaged with 300 cm per box.

Price Code: SG (CT-23), SJ (CT-40), SK (CT-W10, CT-W20)

Suremark® CT-O



Like the rest of our CT products, the new CT-O is opaque and artifact-free, making it perfect for indicating and marking details in CT Scans.

Packaged with 50 markers per box.

Price Code: SJ



Suremark® CT-CR3

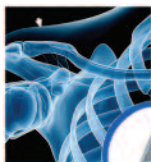


Created by request, the new CT-CR3 is another precision skin marking tool perfectly suited for CT applications.

Packaged with 50 markers per box.

Price Code: SJ





SL-Arrow being used to mark location of pain in patient



SL-Arrow

Suremark[®] Arrow™

Easy-peel tabs with a 1mm x 8mm lead arrow on transparent, disposable label. The best tool to use when a directional marker is preferred. Especially useful to indicate foreign bodies, points of entry, ribs, and for use in radiation therapy.

Packaged with 100 markers per box.
Price Code: SE



SL-CR1

Suremark[®] Cross Reference™

The SL-CR1 is a 1/2" lead cross placed on a disposable tabbed label. Excellent for marking the central axis ray.

Packaged with 50 markers per box.
Price Code: SE



SL-Right

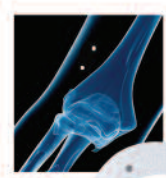


SL-Left

Suremark[®] Right™ and Left™

These disposable "right" and "left" markers are useful in a variety of situations, including bloody trauma cases, portable procedures, and isolation cases. Each label contains a 1/2" (1.2cm) lead letter mounted on a 7/8" (2.23cm) x 1 7/8" (4.76cm) backing, with an easy-peel edge for convenient removal after the label is used.

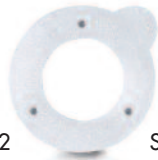
Packaged with 100 markers per box.
Price Code: SF



SL-M2 marker indicating the location of a raised mole on patient.



SL-M2



SL-M3

Suremark® Mole Markers™

These markers are uniquely designed to locate raised moles and other skin nevi without overshadowing microcalcifications. The radiolucent ring, when placed around a protuberance, prevents flattening due to compression.

Available with 2 ref. points (SL-M2) or 3 ref. points (SL-M3).

Packaged with 50 markers per box.

US Patent Number 6,269,148

Price Code: SE



SF-10



Actual Size: 6.4mm



VF-10



BH-5

SL-DT1



DentalMark™ Facial Marking System

SF-10 is for use with Conventional Cephalometrics.

VF-10 is ideal for Cone Beam CT.

Packaged with 110 markers per box.

Price Code: SE (SF-10), SK (VF-10)

Convenient Box Holder

This convenient box holder provides a permanent, visible storage area for your Suremark® skin marking systems. Holds five standard boxes, or two R and L boxes. Place on a desktop or mount to a wall or imaging machine. Also available: BH-10

Price Code: XE (BH-5), XJ (BH-10)

Double Sided Foam Tape

These reusable 1/2" x 1" double sided tape strips are ideal for fastening film markers to cassettes.

SL-DT1 Price Code: FL

Packaged with 110 strips per box.

Price Code: FL



P.O. Box 1570, Simi Valley, CA 93062
Visit us online at www.suremark.com

PRSRT STD
U.S. POSTAGE
PAID
SUREMARK

